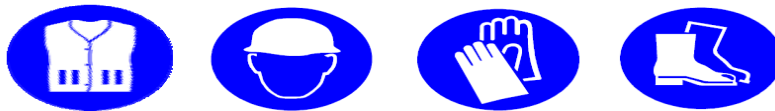


Personal Protective Equipment (PPE) Required



Main Hazards



Method

1. The customer is responsible for providing an appropriate number of able bodied personnel for the unload of all materials.



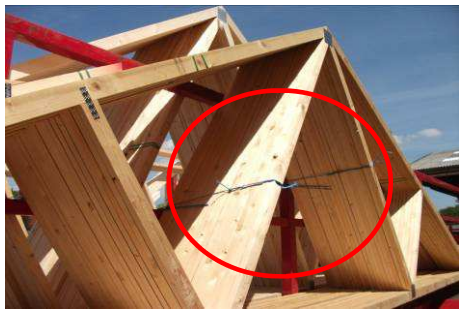
2. The customer is responsible for the provision of sufficient labour to lift the product in accordance with the Manual Handling Operations Regulations 1992. The manual lifters **MUST NOT** lift and load beyond their lifting capacity.

If the unload is deemed to be unsafe, the driver will contact Pasquill for instruction of which may result in the load being returned back to the manufacturer.

3. The driver will position the vehicle where possible to ensure that truss packs are leaning towards the centre bars and are secured in position.



4. Pasquill will supply truss packs secured to the trailer with blue 3 core rope. You shall familiarise yourself with which rope attaches which pack to the centre bars.



5. The driver will cut the **banding** securing the truss pack to allow separation of the individual trusses. This must be carried out using a closed blade pruning staff.



6. Once the load stability has been checked the driver will loosen the transportation straps on the side being unloaded.



7. The driver will then separate each truss at the heel by placing a wedge between the first and second truss.



8. Once this wedge is in place the driver will then strap if possible the remaining bundle to the centre bars leaving the separated truss to be off loaded.



9. The customer team will then take hold of the truss while the driver cuts the blue rope. Once the blue rope has been cut the team will then off load the truss in a safe manner. Proceed with this recommended method for the remaining trusses.

