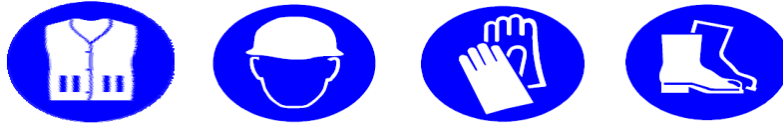


Personal Protective Equipment (PPE) Required



Main Hazards



Method

1. The contractor is responsible for the provision of the forklift and its qualified operator. The forklift truck is any form of mechanical lifting equipment where the lifting appliance is two forks.



2. After parking on site the driver should inspect the load ensuring that it is still secure, with all banding & rope in place. Once inspected the driver must sign in at the site managers office.

If the unload is deemed to be unsafe, the driver will contact Pasquill for instruction which may result in the load being returned back to the manufacturer.

3. Pasquill will supply truss packs secured to the trailer with blue 3 core rope. You shall familiarise yourself with which rope attaches which pack to the centre bars.



4. On instruction from the site responsible person the driver will release the transport straps on the side being unloaded ensuring no one is within the danger area as shown in the pictures.



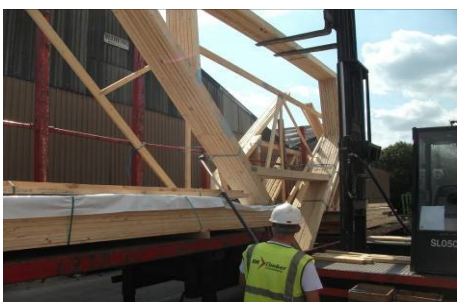
5. The operator must position the forklift in an appropriate area to ensure the trusses are lifted safely. The forklift will take the weight of the trusses on the forks. Ensure no one is within the danger area.



6. **NEVER** stand between the forklift and trailer, do not allow others to enter this danger area. **NEVER** stand on or under the forks. Ensure the danger area remains clear at all times.



7. Once the pack is supported the driver will cut the individual rope attaching the pack to the bars. This must be carried out from a safe position using the drivers cutting tool.



8. The forklift will then remove the truss pack from the trailer, position the apex of the pack onto the floor and reverse back slowly lowering the boom. Bearers can be used to support the underside of the pack



9. Once lowered the forklift will remove the forks and re-invert the truss pack at the apex. Once fully supported the truss pack can then be moved to its location.

